



CAROMA

# SMART COMMAND Electronic Shower

Electronic Temperature Controlled,  
Bluetooth® Enabled Smart Shower

CI/SfB	(74.1)	g3
Date	March 2020	

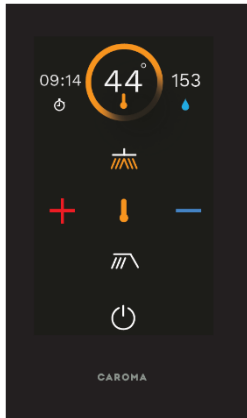
Supersedes all previous issues

# 13.07.1





# SMART COMMAND Electronic Shower



- Responsive LCD Touchscreen that functions wet or dry
- Precise control of temperature
- Diverter functionality allows user to switch between overhead shower, hand shower and 'Eco' water recirculation system outlet.
- Feedback display of Current Temperature, Water Usage and Run Time
- Easy access to serviceable components
- Bluetooth enabled for direct access from a smart device and communication to Gateway\*
- Smart device application enables faster commissioning and maintenance
- Complete with control box and power supply

## Part Number

98465W	Smart Command Electronic Shower <b>Rough In Kit</b>
98464B	Smart Command Electronic Shower <b>Control Panel</b>
510211	Smart Command Electronic Shower <b>Mixer Diverter (1 Outlet)</b>
510212	Smart Command Electronic Shower <b>Mixer Diverter (2 Outlet)</b>
510213	Smart Command Electronic Shower <b>Mixer Diverter (3 Outlet)</b>

<b>Outlet:</b>	Flowrate determined by Shower Head. Max flowrate = 15LPM Max Flowrate
<b>Electronics:</b>	Supply voltage to the system is 240V AC 50Hz. Operating current 12 volts DC.
<b>Installation:</b>	Dual Temperature Inlets DN15 (G1/2") water connections ( all Inlet & Outlet ports) For general electrical connection install a plug socket 240V AC.
<b>Dimensions:</b>	<i>All dimensions are in millimetres and are subject to normal manufacturing variations. Caroma pursues policy of continued improvement in design and performance of its products. The right is therefore reserved to vary specifications without notice.</i>

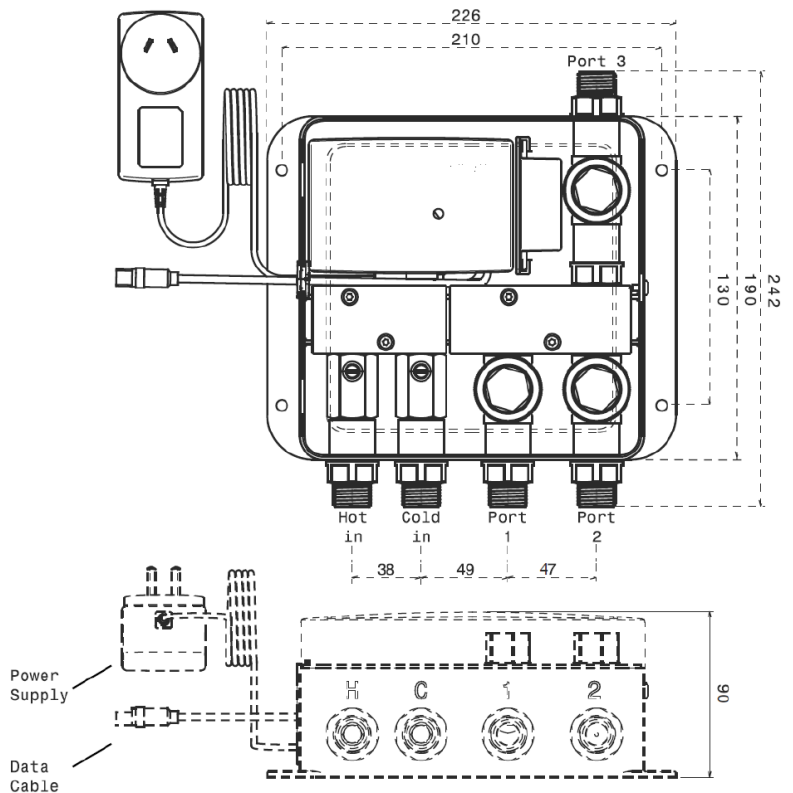
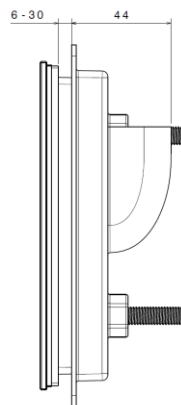
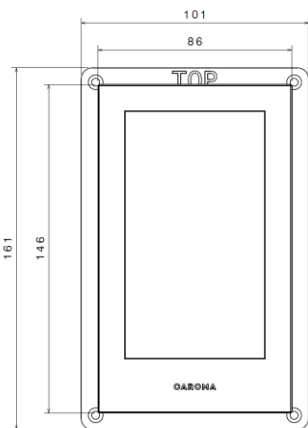


Figure 1: Overall Dimensions (External)

Figure 2: Product Assembly



<b>Dimensions</b>	<b>Control Panel</b> (visible): 86mm x146mm x6mm <b>Mixer:</b> 226mm x 242mm x 90mm
<b>Weight</b>	Gross: 2.5kg
<b>Control Panel &amp; Sensor type</b>	Colour TFT – Touchscreen
<b>Ambient Operating (Air) Temperature</b>	0°C...60°C
<b>Electrical requirements</b>	220-240V 50/60Hz AC Outlet (AS/NZS 3112 compliant) installed in accordance with AS/NZS3000. <ul style="list-style-type: none"> <li>Power must be continuous to enable correct operation.</li> <li>Electrical Outlet to be located within 900mm (cable distance) from the installed Mixer.</li> <li>Note: One electrical outlet is required per Product</li> <li>The Mixer/Diverter can be installed within 2.0m (cable length) from the Control Panel location. Additional extension cables (included) will allow the Mixer to be positioned up to a total of 7.0 m (cable distance) from the Control Panel if required.</li> </ul> <p><i>* WARNING: The product requires connection to electrical power, and it will not operate unless power is connected.</i></p>
<b>Product Electrical Specifications</b>	12V DC (from included Low Voltage Power Supply) 1.5A Max.
<b>Power Consumption</b>	3.6W - Standby 7.8W – Activation ( ie: Port Open).
<b>Operating Water Temperature</b>	Cold 5° - 25°C; Hot 55°- 60°* <i>* If the hot water supply exceeds 60°C, a suitable temperature limiting valve MUST be fitted to the hot water supply, prior to the inlet fittings. The temperature limiting valve must be installed as per the manufacturer's instructions and in accordance with AS3500.</i>
<b>End Connectors (Plumbing)</b>	G ½ BSP Male; Hot & Cold Inlets and all Outlets.
<b>Isolating Valves, Check Valves &amp; Strainers</b>	Integrated into Hot and Cold Inlets
<b>Maximum Operating Pressure (Dynamic)</b>	100-500 kPa
<b>Maximum Pressure</b>	1000 kPa
<b>Inlet Pressure Ratio</b>	
<b>Maximum Inlet Pressure ratio (dynamic) for stable operation</b>	10:1
<b>Operating Outlet Temperature range</b>	20°- 50°C
<b>Maximum Outlet Temperature</b>	50°C
<b>Maximum user adjustable Temperature (default: Factory Preset)</b>	45°C (set using Smart Command App)
<b>Isolating Valves, Check Valves &amp; Strainers</b>	Integrated into Hot and Cold Inlets
<b>Flowrate at Pressure 9Dynamic)</b> (at 38oC Mixed Outlet Water Temperature)	Minimum @ 100kPa = 7 lpm Maximum @ 500kPa = 15 lpm.
<b>IP Rating</b>	IP67 (Control Panel only), IPX4 (Mixer Assembly)
<b>BMS Connection Type</b>	Compatible with BACnet BMS connection via Caroma Smart Command Bluetooth® Gateway (410100) & Concentrator (410101) Connectivity with Caroma Smart Command Cloud
<b>Communication Protocol</b>	Bluetooth® 4.0
<b>Power Supply EMC Approvals</b>	CE, C-Tick and FCC
<b>Power Supply Safety Approvals</b>	RCM, UL, CUL, TUV, GS, SAA, CE and CB
<b>Power Supply Safety Compliance</b>	AS/NZS 60950, UL 60950, EN 60950, IEC 60950
<b>EMC Compliance</b>	AS/NZS61000-6-3, AS/NZ4268:2017 AS/NZS CISPR 32:2015 (ITE Class B)
<b>Electrical Safety Compliance</b>	AS/NZS 60335.1
<b>Packaging</b>	Dimensions:250x250x150 Quantity: 1

\* Note: Technical Specification subject to change