

Components Overview

COMPONENT	QUANTITY
Left hand arm	1
Right hand arm	1
Hingle plate assy	1
Gasket	4
Adhesive tape	4
Inner bush	2
Outer bush	2
Blanking cap	2
M8 hex nut	2
M8 SS washer	4
M8 nylon washer	2
M8 bolt	2
M8 flange nut	2
M8 fixing screw	2
Spacer	2
Fixing nut	2
Fixing bush	2

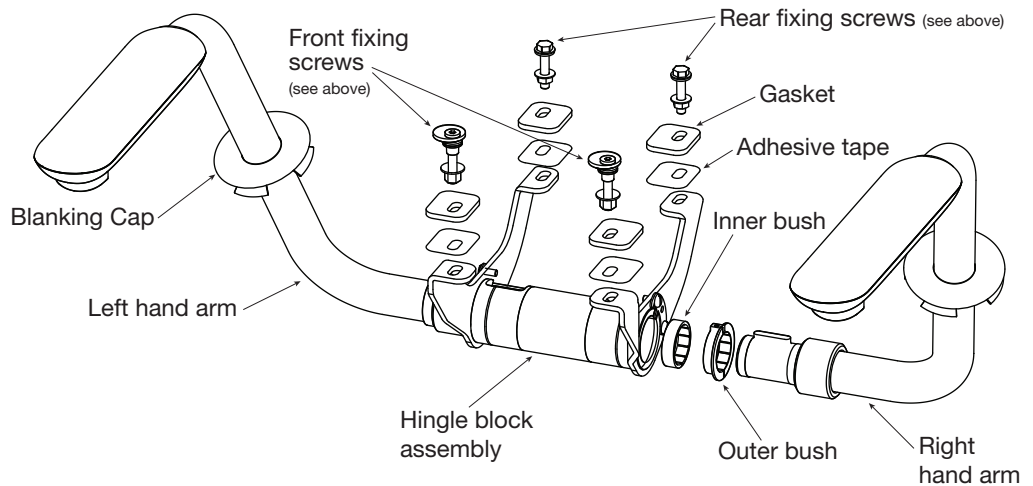
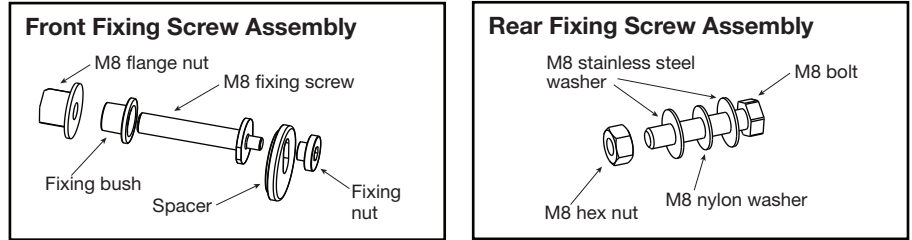


Fig. 1

1. Unpack and check all components as shown in **Fig. 1** above are supplied and unmarked.

Hinge Block Assembly Installation

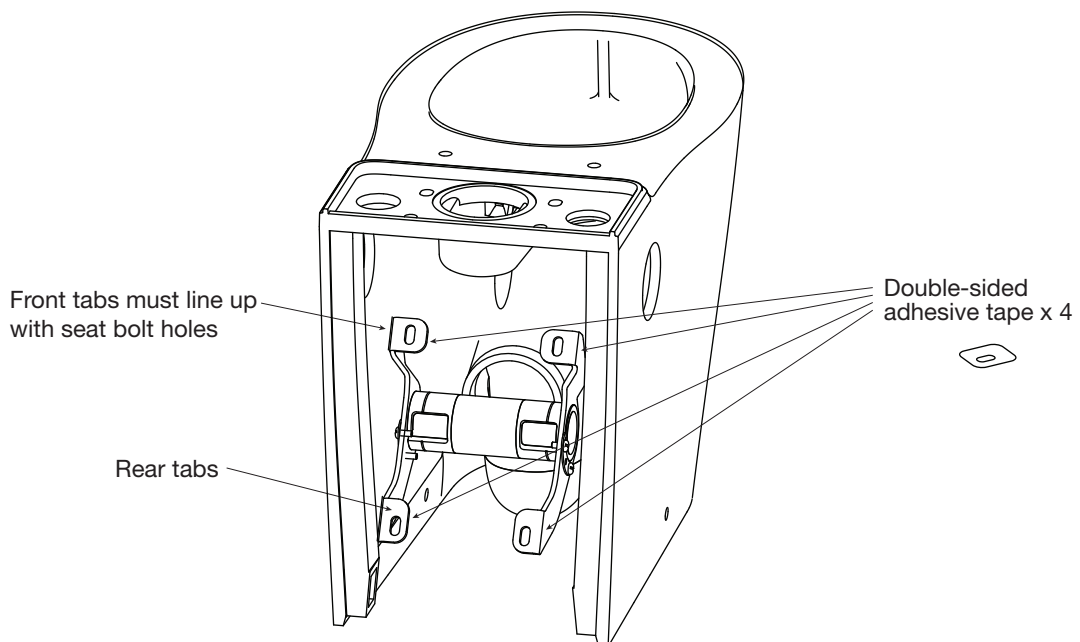


Fig. 2

2. Apply the double-sided adhesive tape to the hinge block assembly tabs. Insert hinge block assembly through back of pan at a slight upward angle as shown above in **Fig. 2**.

Hinge Block To Pan Assembly

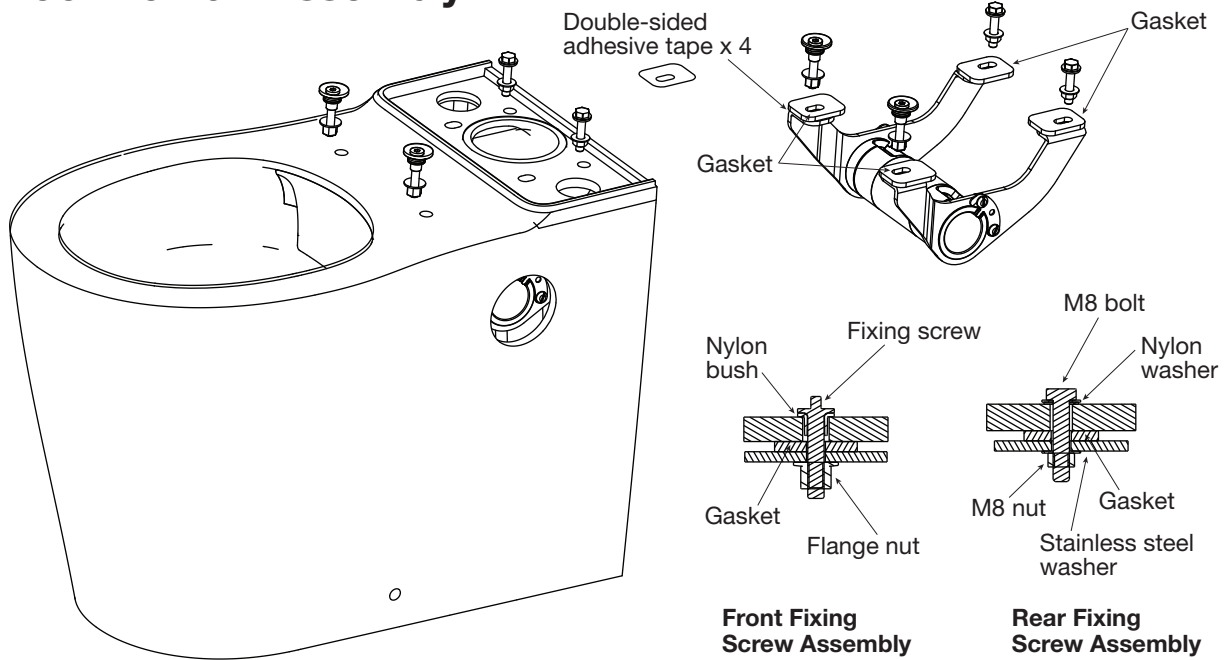


Fig. 3

3. Attach the four gaskets to the adhesive tape and loosely assemble both the front and back fixing assemblies as shown above in **Fig. 3**. Note the position of the nylon washer which contacts the pan.

Hinge Bracket Installation Adjustment

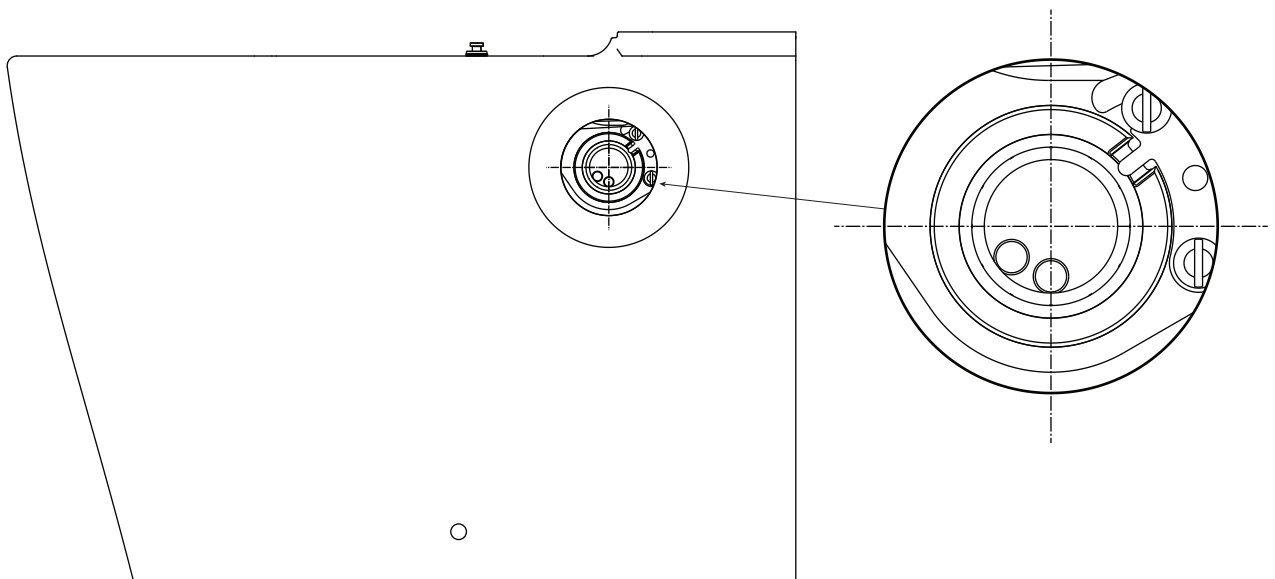


Fig. 4

4. Move the bracket back or forward to ensure bracket hole is aligned with hole in pan as shown above in **Fig.4**. Once aligned tighten four fixing bolts securely.

Arm Installation

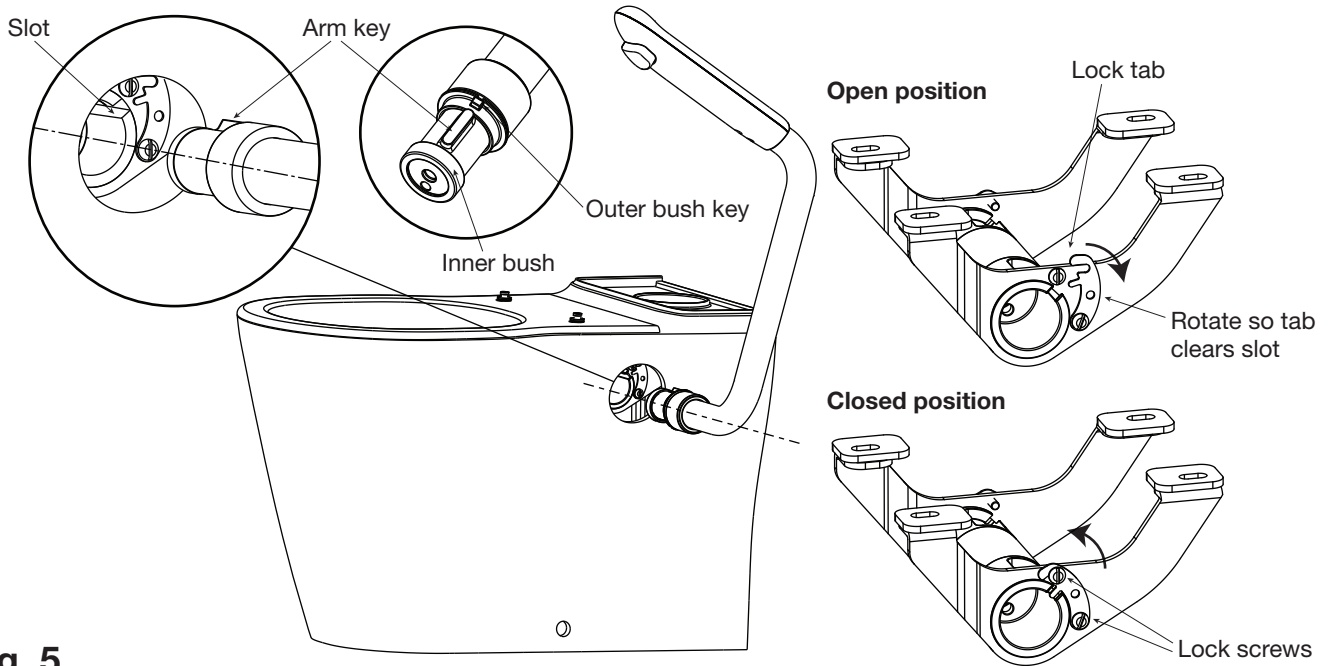


Fig. 5

5. Rotate lock tabs backwards so tab clears slot. Install inner and outer bushes ensuring outer bush key is aligned to key as shown above in **Fig. 5**. Install arms by tilting back and aligning key into slot. Once arms are in place ensure they rotate up and down and locking mechanism functions. Now rotate lock tab into closed position and secure by tightening two screws on each side of bracket. Arm should lock in both upper and lower position. Button releases lock.

Blanking Cap Installation

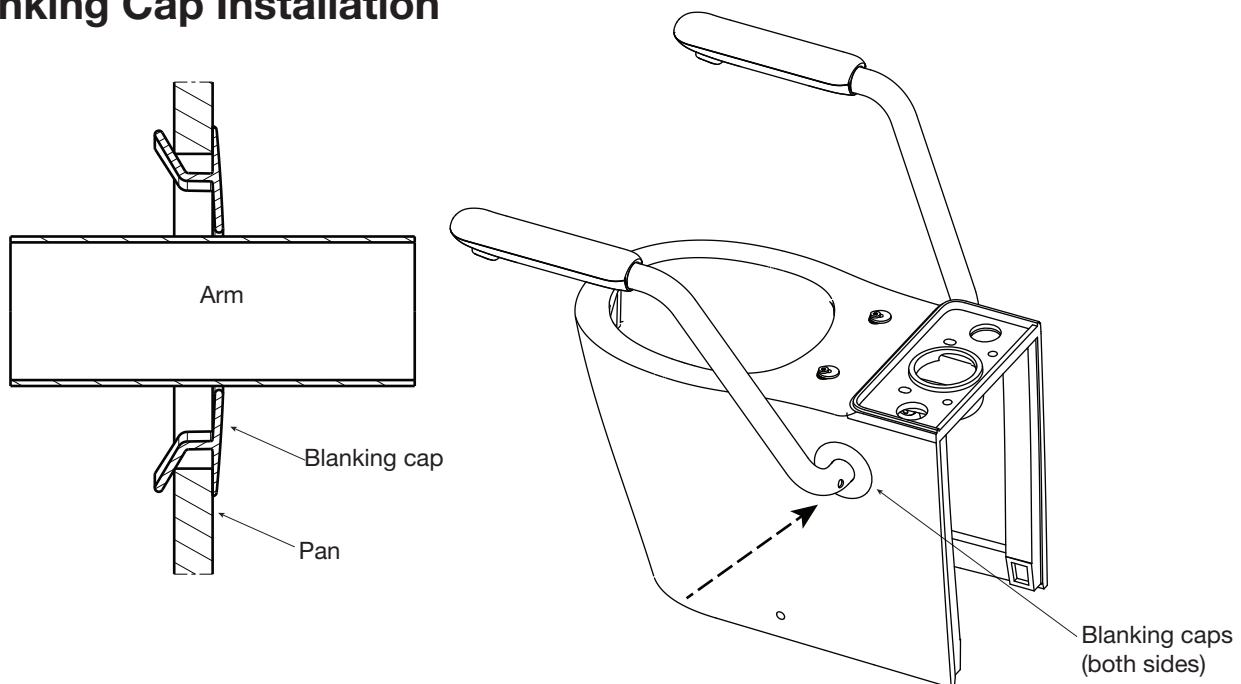


Fig. 6

6. Install blanking caps into pan, ensure cap is flush with outside of pan and there are no visible gaps. (Silicone can be applied to hold cap to pan). Ensure that arms move freely up and down and caps do not interfere with movement.

Pan Installation

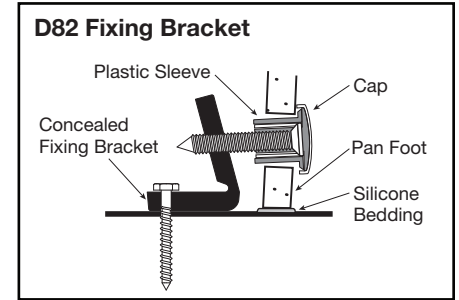
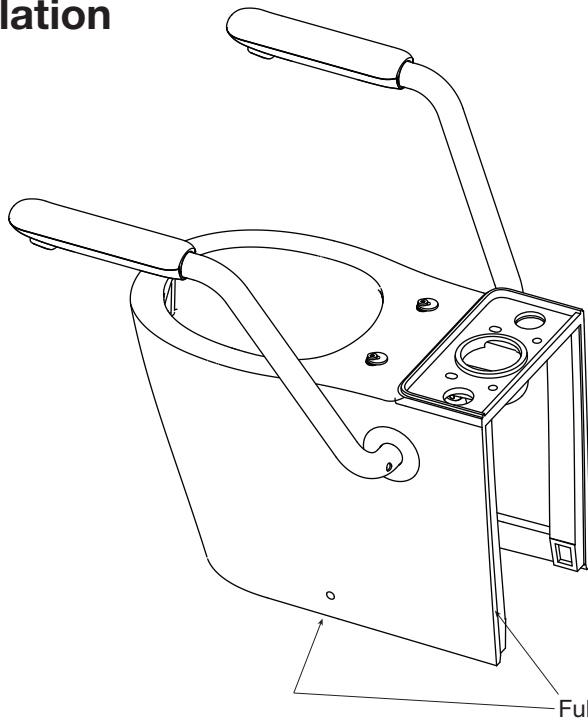


Fig. 7

7. Pan can now be installed as outlined in pan installation instructions. A full silicone bead and D82 fixing brackets must be installed as shown above in **Fig. 7**. It is very important that the bond with the floor is good, thus substate must be clean and in good condition. Allow 24hrs for sealant to set before use.

Seat Installation

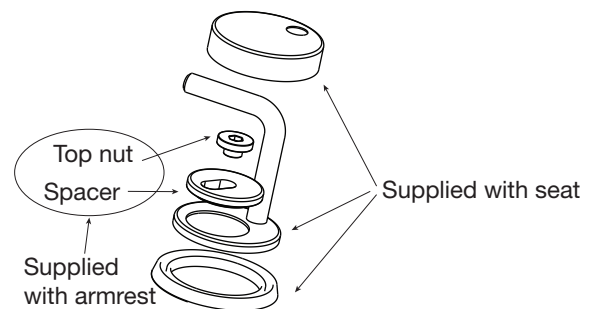
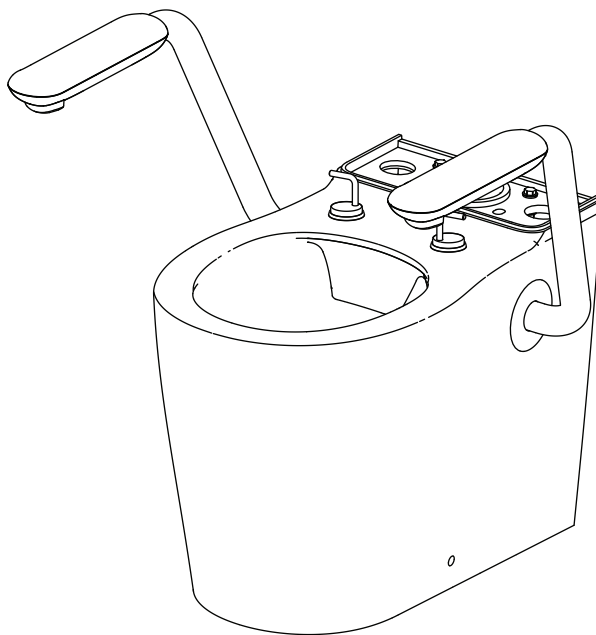


Fig. 8

8. Fix seat hinge to pan as shown in **Fig. 8**. Ensure that you use the spacer provided in the armrest kit. **Discard original spacer supplied with seat, use spacer supplied with armrest.**