

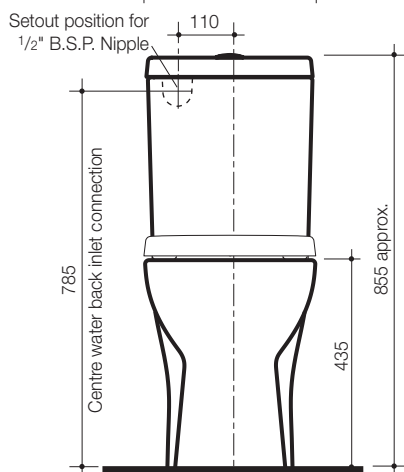
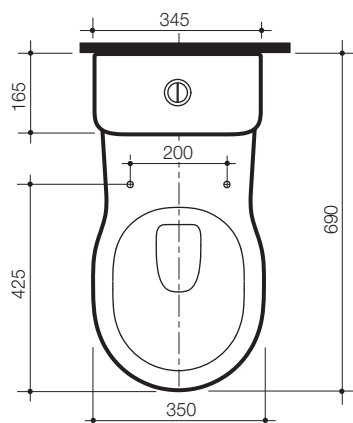
Opal II Easy Height

4.5 litre Vitreous China Wall Faced Close Coupled Suite

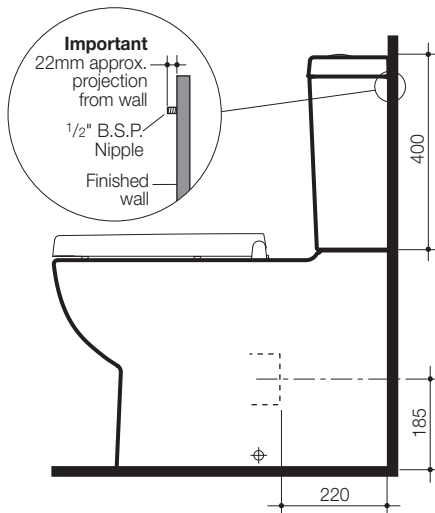
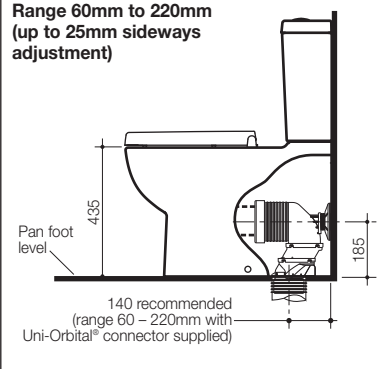


A modern close coupled 4.5/3 litre dual flush toilet suite with clean simple lines the fully integrated wall faced toilet suite featuring a raised height seat, smooth rounded surfaces and concealed plumbing fittings provides for optimum appearance and ease of cleaning. Ideal for aged care applications where a raised seat height offers the advantage of easier use for persons with restricted movement. A matching soft close seat is provided as standard. The pan connection system includes the patented Caroma Uni-Orbital® connector for increased installation flexibility. The Caroma Uni-Orbital® connector extends to any position in a 25mm radius, unlike traditional connectors that only move backwards and forwards. The setout range is from 60mm – 220mm with a recommended setout of 140mm, providing installation versatility for both new and renovation applications. The cistern is back inlet only with ½" B.S.P. inlet stop valve and inlet connection concealed within the cistern. Fitted with low profile chrome plated push buttons and the Unifill inlet valve for ultra quiet fast fill as standard.

- Pan:** Opal II Easy Height 4.5 litre full flush washdown pan with box flushing rim.
- Traps:** Universal trap for S or P-trap installations. 50mm vent option available.
- Cisterns:** Opal II cistern – has a free fitting lid and is suitable for domestic and light commercial applications. Available as internal overflow. Standard back inlet.
Vandal Resistant Conversion Kit – A simple to install conversion is available for the standard mechanism to lock lid onto the cistern, recommended for use in heavy use commercial areas. Code No.750109.
 Cistern inlet stop valve and inlet connection is concealed within the cistern and is included. **Important: Working pressure minimum 30kPa to maximum 1000kPa flow pressure. Rain water tank compliant. Accurate wall setout for B.S.P. ½" Nipple water inlet connection is essential.**
- Buttons:** Round Care Button - Metal (supplied). Other button options sold separately. See section 4 - CARE BUTTONS for further details.
- Fixing:** The cistern is fixed directly to the pan with a robust concealed base fixing system without the need for wall fixing.
- Seats:** The Opal II single flap or Opal II soft close double flap toilet seat is provided as standard with this suite. A quality solid section compression moulded toilet seat fitted with buffers and chrome hinges.
- Colour:** White only.
- Installation:** The installation of the toilet suite shall be in accordance with the normal minimum drainline grade requirements in AS/NZS 3500.2.
- Dimensions:** All dimensions are in millimetres and are subject to normal manufacturing variations. Caroma pursues a policy of continuing improvement in design and performance of its products. The right is therefore reserved to vary specifications without notice.

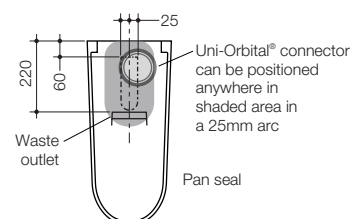
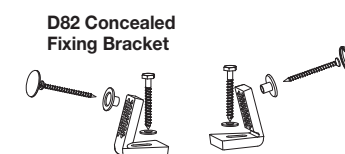


**Uni-Orbital® Connector Setout
Range 60mm to 220mm
(up to 25mm sideways
adjustment)**



**Opal II Easy Height Wall
Faced Close Coupled
Toilet Suite with Seat:**

	Code No.	Seat colour:
Opal II Single Flap Seat	985100	W
Opal II Soft Close Double Flap Seat	985200	W



Note: All height dimensions to underside of pan, make allowance for bedding.

Bedding: The pan should be fixed to the floor with a sand cement mixture of 3:1 to a depth of 60mm. Do not use lime or fast drying cement in the bedding mixture. When bedded the back of the foot of the pan should be approximately 10mm above the finished floor.

Bracket fixing: The pan should be bedded with an acetic cured silicone sealant and fixed with the D82 Fixing Brackets supplied.