

# Opal 510/720/900 Twin/920 Wall Basin

## Ceramic Wall Basin

**Basin Size 510:** 510mm x 450mm (nominal).

**Basin Size 720:** 720mm x 450mm (nominal) left or right shelf.

**Basin Size 900:** 900mm x 450mm (nominal).

**Basin Size 920:** 920mm x 450mm (nominal) left or right shelf.

**Basin Capacity:** 9.5 litres.

The **Opal** wall basins are an extensive range of co-ordinated basins that allows continuity of design throughout the project where basins of matching design for different applications are required. The design offers smooth rounded contours and clean lines. Available with optional shroud, these basins are suitable for domestic, commercial and ♿ accessible applications (refer to Caroma Care Wall Basin section).

**Tap Holes:** Basins available in no taphole, one taphole (centre) and three taphole options.

**Shroud:** (Optional) The shroud completely conceals the P-trap waste pipe fittings. **Concealed Fixing Bracket** (supplied with shroud). Must use 40mm Short P-trap, Code No. 102115. **Note:** It is essential for the installation of the shroud to the basin that clearance is provided for the shroud in the plumbing setout from water inlet pipes and connections.

**Waste:** Basins supplied with chrome grate waste.

**Overflow:** Overflow not available.

**Fixing:** **D.200 Basin Fixing Kit** (supplied) – bolts directly to finished wall.

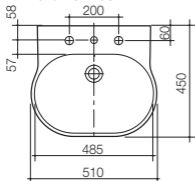
**Installation:** Refer to *Important Information for Plumbers* section.

**Colours:** White only.

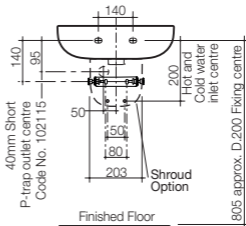


# Opal 510/720/900 Twin/920 Wall Basin (Continued)

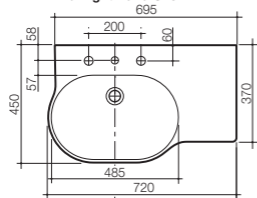
**510 Wall Basin**



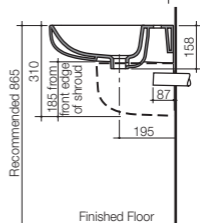
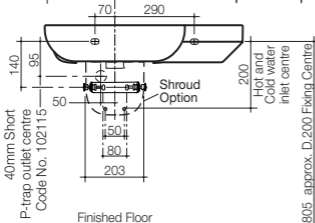
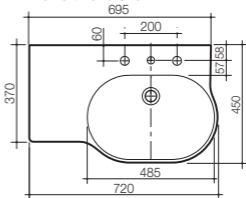
For side view refer to 720 Shelf Drawing



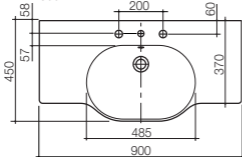
**720 Right Hand Shelf**



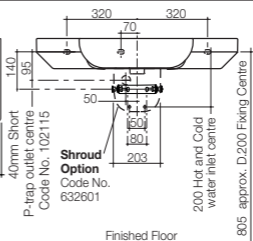
**720 Left Hand Shelf**



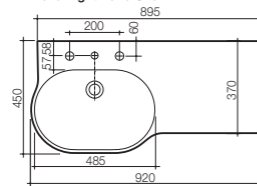
**900 TWIN**



For side view refer to 720 Shelf Drawing



**920 Right Hand Shelf**



**920 Left Hand Shelf**

